



## Compact Dry X-SA (Improved SA)

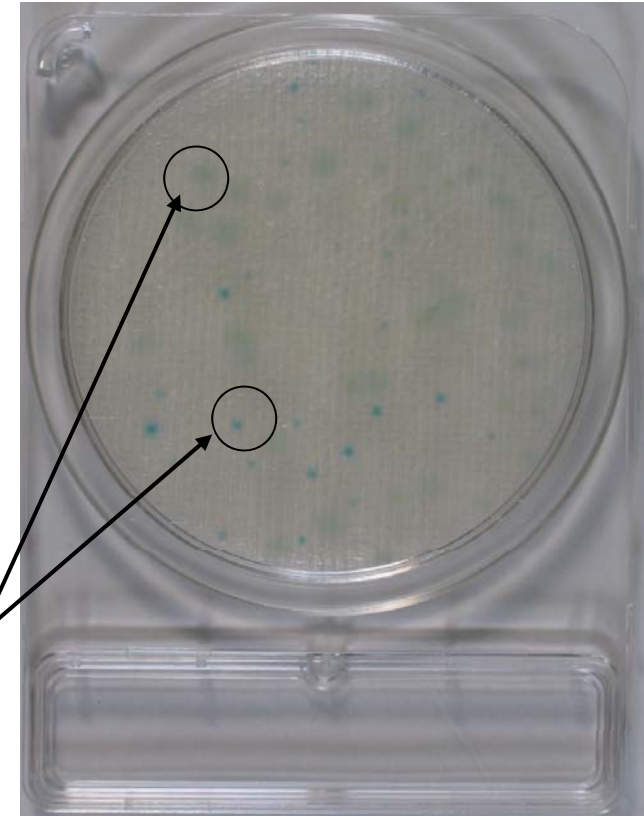
- New Chromogenic media.
- *S.aureus* can grow as blue colony.
- Other bacteria can grow as distinguishable colony or is inhibited.
- Rapid detection  
Incubation time is 24hrs at 35C.
- Shelf life is 18 month at room temp.  
(Realtime stability test is ongoing.)
- **APPROVED: AOAC and Microval**  
**(NordVal submitted)**





## Compact Dry X-SA (continue)

- *Staphylococcus* spp. except for *S.aureus* can grow as small white colony.
- Other bacteria forms distinguishable colony (white or magenta) if it grows on X-SA plate.
- Certain *Bacillus* sp. (especially *B.cereus* and *B.thuringiensis*) is suppressed partially but they form frosted glass shaped light blue colony.
- Both of colonies can be distinguished by colony aspect.
- *S.aureus*: blue colony (1-2 mm dia.)
- *B.cereus*: frosted glass shaped light blue colony.

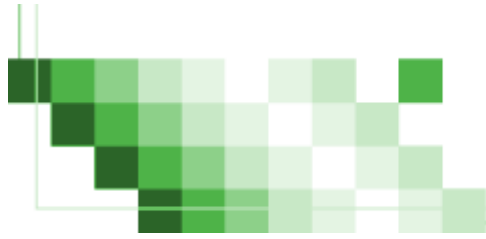


# Compact Dry X-SA (strains data)

	Compact Dry	Petrifilm STX	X-SA	Baird-Parker	MSEY
Gram negative (Colony color:logCFU/ml)	X-SA				
<i>Aeromonas hydrophila</i> JCM 3976	not grown	not grown	not grown	not grown	not grown
<i>Citrobacter amalonaticus</i> ATCC 25405	not grown	not grown	not grown	not grown	not grown
<i>Citrobacter koseri</i> ATCC 25408	not grown	not grown	not grown	not grown	not grown
<i>Citrobacter freundii</i> ATCC 8090	not grown	not grown	not grown	not grown	not grown
<i>Enterobacter aerogenes</i> ATCC 13048	not grown	not grown	not grown	not grown	not grown
<i>Enterobacter amnigenus</i> ATCC 33072	not grown	not grown	not grown	not grown	not grown
<i>Enterobacter cloacae</i> ATCC 13047	not grown	not grown	not grown	black >5.00	not grown
<i>Enterobacter intermedius</i> ATCC 33423	not grown	not grown	not grown	not grown	not grown
<i>Enterobacter intermedius</i> ATCC 33110	not grown	not grown	not grown	not grown	not grown
<i>Enterobacter sakazakii</i> ATCC 29544	not grown	not grown	not grown	not grown	not grown
<i>Escherichia coli</i> ATCC 11775	not grown	not grown	not grown	not grown	not grown
<i>Escherichia coli</i> ATCC 25922	not grown	not grown	not grown	not grown	not grown
<i>Escherichia coli</i> ATCC 8739	not grown	not grown	not grown	not grown	not grown
<i>Escherichia coli</i> ATCC 9637	not grown	not grown	not grown	not grown	pink >5.00
<i>Escherichia coli</i> Serotype O157 ATCC 35150	not grown	not grown	not grown	not grown	not grown
<i>Escherichia coli</i> Serotype O157 ATCC 43888	not grown	not grown	not grown	not grown	not grown
<i>Escherichia hermanii</i> JCM 1473	not grown	not grown	not grown	not grown	not grown
<i>Hafnia alvei</i> ATCC 13337	not grown	not grown	not grown	not grown	not grown
<i>Klebsiella oxytoca</i> ATCC 13182	not grown	not grown	not grown	not grown	not grown
<i>Klebsiella ozaenae</i> ATCC 11296	not grown	not grown	not grown	not grown	not grown
<i>Klebsiella pneumoniae</i> ATCC 13883	not grown	not grown	not grown	not grown	not grown
<i>Kluyvera ascorbata</i> ATCC 33433	not grown	not grown	not grown	not grown	not grown
<i>Kluyvera cryocrescens</i> ATCC 33435	not grown	not grown	not grown	not grown	not grown
<i>Morganella morganii</i> ATCC 25830	not grown	not grown	not grown	black >5.00	not grown
<i>Proteus mirabilis</i> ATCC 29906	not grown	not grown	not grown	black >5.00	pink >5.00
<i>Proteus vulgaris</i> ATCC 13315	not grown	not grown	not grown	black >5.00	not grown
<i>Pseudomonas aeruginosa</i> ATCC 10145	not grown	not grown	not grown	not grown	not grown
<i>Pseudomonas aeruginosa</i> ATCC 27853	not grown	not grown	not grown	not grown	not grown
<i>Pseudomonas aeruginosa</i> ATCC 9027	not grown	not grown	not grown	not grown	not grown
<i>Pseudomonas putida</i> ATCC 12633	not grown	not grown	not grown	not grown	not grown
<i>Rahnella aquatilis</i> ATCC 33071(JCM 1683)	not grown	not grown	not grown	not grown	not grown
<i>Salmonella</i> Typhimurium ATCC 13311	not grown	not grown	not grown	not grown	not grown
<i>Salmonella</i> Choleraesuis ATCC 13312	not grown	not grown	not grown	not grown	not grown
<i>Serratia fonticola</i> ATCC 29844	not grown	not grown	not grown	black >5.00	not grown
<i>Serratia liquefaciens</i> ATCC 27592	not grown	not grown	not grown	not grown	not grown
<i>Serratia marcescens</i> ATCC 13880	not grown	not grown	not grown	not grown	not grown
<i>Serratia marcescens</i> ATCC 8100	not grown	not grown	not grown	not grown	not grown

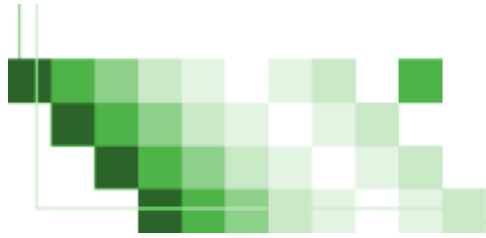
# Compact Dry X-SA (strains data)

Gram positive (except for Staphylococci), Yeasts (Colony color:logCFU/ml)	Compact Dry X-SA	Petritilm STX	X-SA	Baird-Parker	MSEY
<i>Bacillus cereus</i> ATCC 19637	<i>pale blue</i> 4.95	not grown	blue 6.08	not grown	pink 4.69
<i>Bacillus cereus</i> GH-2	<i>magenta</i> 2.53	not grown	blue 4.85	not grown	pink 4.63
<i>Bacillus cereus</i> GH-3	<i>pale blue</i> 5.05	<i>mauve</i> 2.49	blue 4.45	black 3.80	pink 3.80
<i>Bacillus cereus</i> GH-5	<i>pale blue</i> 4.63	not grown	blue 6.18	not grown	not grown
<i>Bacillus cereus</i> GH-6	<i>white *</i> 4.65	not grown	<i>white</i> >6.00	<i>black-EY</i> 5.70	not grown
<i>Bacillus coagulans</i> ATCC7050	not grown	not grown	not grown	not grown	not grown
<i>Bacillus licheniformis</i> ATCC 14580	<i>pink</i> >5.00	<i>blue</i> 3.73	<i>white</i> >6.00	not grown	<i>yellow</i> 6.35
<i>Bacillus pumilus</i> ATCC 7061	not grown	not grown	not grown	not grown	<i>yellow</i> 6.34
<i>Bacillus sphaericus</i> ATCC 14577	not grown	not grown	not grown	<i>black</i> >6.00	not grown
<i>Bacillus subtilis</i> ATCC 6633	<i>magenta</i> 4.52	<i>blue</i> 3.92	<i>white</i> 4.41	<i>black</i> 3.94	<i>yellow</i> >6.00
<i>Bacillus thuringiensis</i> NBRC 3951	<i>pale blue</i> 3.97	not grown	<i>blue</i> 2.48	<i>black</i> 3.15	not grown
<i>Bacillus thuringiensis</i> NBRC 13866	not grown	not grown	not grown	not grown	not grown
<i>Corynebacterium renale</i> ATCC 19412	not grown	not grown	not grown	<i>black</i> >6.00	<i>pink</i> >6.00
<i>Corynebacterium xerosis</i> ATCC 373	<i>white</i> 2.76	<i>mauve</i> 3.48	not grown	<i>black</i> >6.00	not grown
<i>Corynebacterium minutissimum</i> ATCC 23348	not grown	<i>black *</i> >5.00	not grown	<i>black</i> 4.49	<i>pink</i> >6.00
<i>Enterococcus avium</i> ATCC 14025	not grown	not grown	not grown	not grown	not grown
<i>Enterococcus durans</i> ATCC 19432	not grown	not grown	not grown	not grown	not grown
<i>Enterococcus casseliflavus</i> ATCC 51328	not grown	<i>blue</i> >5.00	not grown	<i>black</i> >6.00	<i>yellow</i> >6.00
<i>Enterococcus faecalis</i> ATCC 19433	not grown	<i>purple</i> >5.00	not grown	<i>black</i> 5.99	<i>yellow</i> >6.00
<i>Enterococcus faecalis</i> ATCC 29212	not grown	<i>purple</i> >5.00	not grown	<i>black</i> >6.00	not grown
<i>Enterococcus faecalis</i> ATCC 49383	not grown	not grown	not grown	<i>black</i> >6.00	<i>yellow</i> >6.00
<i>Enterococcus faecalis</i> ATCC 49532	not grown	<i>purple</i> >5.00	<i>white</i> >6.00	<i>black</i> >6.00	<i>pink</i> >6.00
<i>Enterococcus faecalis</i> ATCC 51299	not grown	not grown	not grown	<i>black</i> >6.00	<i>yellow</i> >6.00
<i>Enterococcus faecalis</i> ATCC 51575	not grown	not grown	not grown	<i>black</i> >6.00	<i>yellow</i> >6.00
<i>Enterococcus faecium</i> ATCC 19434	not grown	not grown	not grown	not grown	not grown
<i>Enterococcus faecium</i> ATCC 51559	not grown	not grown	not grown	<i>black</i> >6.00	not grown
<i>Enterococcus faecium</i> ATCC 700221	not grown	not grown	not grown	not grown	not grown
<i>Enterococcus gallinarum</i> ATCC 49608	not grown	not grown	not grown	not grown	not grown
<i>Enterococcus hirae</i> ATCC 8043	not grown	not grown	not grown	<i>black</i> >6.00	<i>yellow</i> >6.00
<i>Enterococcus mundtii</i> ATCC 43186	not grown	not grown	not grown	<i>black</i> >6.00	<i>yellow</i> >6.00
<i>Enterococcus raffinosus</i> ATCC 49427	not grown	not grown	not grown	not grown	not grown
<i>Lactobacillus lactis</i> ATCC 12315	not grown	not grown	not grown	not grown	not grown
<i>Leuconostoc citreum</i> JCM 9698	not grown	not grown	not grown	<i>black</i> >6.00	not grown
<i>Leuconostoc mesenteroides</i> ATCC 27258	not grown	not grown	not grown	not grown	not grown
<i>Micrococcus luteus</i> ATCC 9341	not grown	<i>black</i> 3.20	<i>yellow</i> >6.00	not grown	not grown
<i>Pediococcus acidilactici</i> JCM 5885	not grown	not grown	not grown	not grown	not grown
<i>Streptococcus thermophilus</i> ATCC 14485	not grown	not grown	not grown	not grown	not grown
<i>Candida albicans</i> ATCC 2091	not grown	not grown	not grown	<i>white</i> >6.00	<i>clear *</i> 5.97
<i>Candida albicans</i> ATCC 10231	not grown	not grown	not grown	<i>white</i> >6.00	not grown
<i>Saccharomyces cerevisiae</i> NHL 10010	not grown	not grown	not grown	not grown	not grown
	*: small colony				
	EY: egg yolk reaction				
	<i>Italic letter</i> : colony appears like the frosted glass				



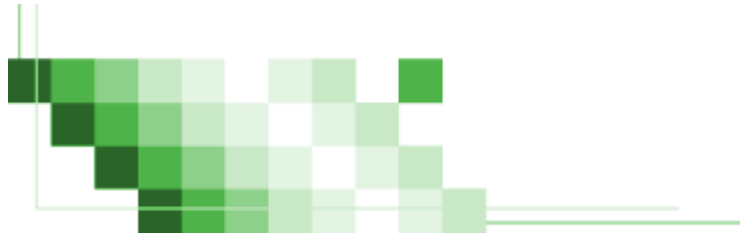
# Compact Dry X-SA (strains data)

<i>S.aureus</i> (Colony color:logCFU/ml)	Compact Dry	Petrifilm STX	X-SA	Baird-Parker	MSEY	SPC
	X-SA					
<i>Staphylococcus aureus</i> ATCC 8095	blue 8.56	mauve 8.04	blue 8.57	black-EY 8.69	yellow-EY 8.74	8.58
<i>Staphylococcus aureus</i> ATCC 8432	blue 8.36	mauve 8.27	blue 8.57	black-EY 8.84	yellow-EY 8.36	8.33
<i>Staphylococcus aureus</i> ATCC 9144	blue 7.89	mauve 7.53	blue 8.25	black-EY 8.75	yellow-EY 8.24	8.06
<i>Staphylococcus aureus</i> ATCC 10390	blue 8.49	mauve 8.52	blue 8.89	black-EY 8.99	yellow-EY 8.77	8.56
<i>Staphylococcus aureus</i> ATCC 10537	blue 8.00	mauve 8.24	blue 8.65	black-EY 8.66	yellow-EY 8.06	8.33
<i>Staphylococcus aureus</i> ATCC 10832	blue 7.53	mauve 7.58	pale blue 8.49	black-EY 8.28	yellow-EY 7.86	7.89
<i>Staphylococcus aureus</i> ATCC 11371	blue 8.05	mauve 8.30	blue 8.67	black-EY 8.84	yellow-EY 8.39	8.15
<i>Staphylococcus aureus</i> ATCC 11987	blue 7.52	mauve * 7.48	blue 7.20	black-EY 8.79	yellow-EY 8.25	8.49
<i>Staphylococcus aureus</i> ATCC 11988	blue 8.56	mauve 8.29	blue 8.80	black-EY 9.02	yellow-EY 8.27	8.54
<i>Staphylococcus aureus</i> ATCC 11632	blue 7.86	mauve 8.59	blue 8.60	black-EY 8.85	yellow-EY 8.49	8.61
<i>Staphylococcus aureus</i> ATCC 12692	blue 7.79	mauve 7.67	blue 8.58	black-EY 8.58	yellow-EY 8.06	7.97
<i>Staphylococcus aureus</i> ATCC 13150	blue 8.29	mauve 8.24	blue 8.81	black-EY 8.72	yellow-EY 8.47	8.31
<i>Staphylococcus aureus</i> ATCC 13565	blue 8.05	mauve 8.02	blue 8.45	black-EY 8.45	yellow-EY 8.44	8.33
<i>Staphylococcus aureus</i> ATCC 21027	blue 7.90	mauve 8.13	blue 8.53	black-EY 8.59	yellow-EY 8.23	8.26
<i>Staphylococcus aureus</i> ATCC 21915	blue 7.39	mauve 7.72	pale blue 7.30	black-EY 8.42	yellow-EY 8.00	8.11
<i>Staphylococcus aureus</i> ATCC 27154	blue 7.67	mauve 8.17	blue 8.49	black-EY 8.79	yellow-EY 7.96	8.14
<i>Staphylococcus aureus</i> ATCC 27664	blue 8.26	mauve 8.43	blue 8.84	black-EY 8.80	yellow-EY 8.34	8.09
<i>Staphylococcus aureus</i> ATCC 29247	blue 7.74	mauve 8.11	blue 8.54	black-EY 8.58	yellow-EY 8.20	8.10
<i>Staphylococcus aureus</i> ATCC 29737	blue 7.88	mauve 8.09	blue 8.93	black-EY 8.63	yellow-EY 8.11	8.23
<i>Staphylococcus aureus</i> ATCC 49444	blue 8.11	mauve 7.72	white 8.24	black-EY 8.73	pink-EY 8.34	8.24
<i>Staphylococcus aureus</i> ATCC 12600	blue 8.51	mauve 8.48	blue 8.75	black-EY 8.86	yellow-EY 8.60	8.65
<i>Staphylococcus aureus</i> ATCC 25923	blue 8.49	mauve 8.34	blue 8.96	black-EY 8.83	yellow-EY 8.37	8.61
<i>Staphylococcus aureus</i> ATCC 29213	blue 8.58	mauve 7.71	blue 9.00	black-EY 8.81	yellow-EY 7.90	8.49
<i>Staphylococcus aureus</i> ATCC 6538	blue 8.48	mauve 8.48	blue 9.05	black-EY 8.77	yellow-EY 8.70	8.78
<i>Staphylococcus aureus</i> ATCC 6538P	blue 8.27	mauve 8.29	blue 8.48	black-EY 8.90	yellow-EY 8.49	8.38
<i>Staphylococcus aureus</i> JCM 2179	blue 7.86	mauve 7.81	blue 8.47	black-EY 8.33	yellow-EY 8.04	8.16
<i>Staphylococcus aureus</i> 日臨技J株(MRSA)	blue 8.18	mauve 8.49	blue 8.87	black-EY 8.87	yellow-EY 8.47	8.57
<i>Staphylococcus aureus</i> NS 1637	blue 8.20	mauve 8.08	blue 8.83	black-EY 8.76	yellow-EY 8.43	8.29
<i>Staphylococcus aureus</i> NS 1720	blue 8.21	mauve 8.03	blue 8.69	black-EY 8.59	yellow-EY 8.31	8.37
<i>Staphylococcus aureus</i> NS 1728	blue 8.15	mauve 8.20	blue 8.72	black-EY 8.79	yellow-EY 8.43	8.48
<i>Staphylococcus aureus</i> NS 1844	blue 8.19	mauve 8.12	blue 8.60	black-EY 8.64	yellow-EY 8.44	8.31
<i>Staphylococcus aureus</i> NS 1845	blue 7.96	mauve 7.54	blue 8.49	black-EY 8.65	yellow-EY 7.70	8.01
<i>Staphylococcus aureus</i> NS 3078	blue 8.58	mauve 8.48	blue 8.93	black-EY 9.10	yellow-EY 8.79	8.79
<i>Staphylococcus aureus</i> NS 3079	blue 8.49	mauve 8.51	blue 8.93	black-EY 8.79	yellow-EY 8.92	8.53
<i>Staphylococcus aureus</i> NS 4706	blue 7.99	mauve 7.48	blue 8.39	black-EY 8.41	pink-EY 8.11	8.09
<i>Staphylococcus aureus</i> NS 4707	blue 8.45	mauve 8.06	blue 8.61	black-EY 8.91	yellow-EY 8.63	8.48
<i>Staphylococcus aureus</i> NS 4708	blue 8.00	mauve * 6.89	blue 8.49	black-EY 8.61	yellow-EY 8.43	8.33
<i>Staphylococcus aureus</i> NS 4709	blue 8.39	mauve 7.70	blue 8.74	black-EY 8.84	yellow-EY 7.62	8.53
<i>Staphylococcus aureus</i> NS 4942	blue 8.29	mauve 7.56	blue 8.51	black-EY 8.56	yellow-EY 8.53	8.36
<i>Staphylococcus aureus</i> NS 4944	blue 8.19	mauve 8.14	blue 8.64	black-EY 8.57	yellow-EY 8.14	8.31
<i>Staphylococcus aureus</i> NS 6823	blue 8.26	mauve 8.18	blue 8.72	black-EY 9.03	yellow-EY 8.48	8.56
<i>Staphylococcus aureus</i> NS 7001	blue 8.32	mauve 8.39	blue 8.78	black-EY 8.90	yellow-EY 8.63	8.57
<i>Staphylococcus aureus</i> NS 7002	blue 8.07	mauve 8.26	blue 8.89	black-EY 8.91	yellow-EY 8.56	8.49
<i>Staphylococcus aureus</i> NS 7665	blue 8.44	mauve 8.41	blue 8.72	black-EY 8.92	yellow-EY 8.58	8.53
<i>Staphylococcus aureus</i> NS 8026	blue 8.06	mauve 8.14	blue 8.87	black-EY 8.59	yellow-EY 8.16	8.36
<i>Staphylococcus aureus</i> NS 9086	blue 7.92	mauve 7.86	blue 8.21	black-EY 8.17	yellow-EY 8.10	8.09
<i>Staphylococcus aureus</i> NS 9087	blue 7.97	mauve * 7.51	blue 8.36	black-EY 8.48	yellow-EY 8.14	8.18
<i>Staphylococcus aureus</i> NS 8288	blue 8.11	mauve 7.89	blue 8.41	black-EY 8.36	yellow-EY 8.07	8.23
<i>Staphylococcus aureus</i> NS 8778	blue 8.04	mauve 8.12	blue 8.78	black-EY 8.82	yellow-EY 8.40	8.13
<i>Staphylococcus aureus</i> NS 9092	blue 8.23	mauve 8.01	blue 8.55	black-EY 8.53	yellow-EY 8.54	8.26
	*: small colony					
	EY: egg yolk reaction					

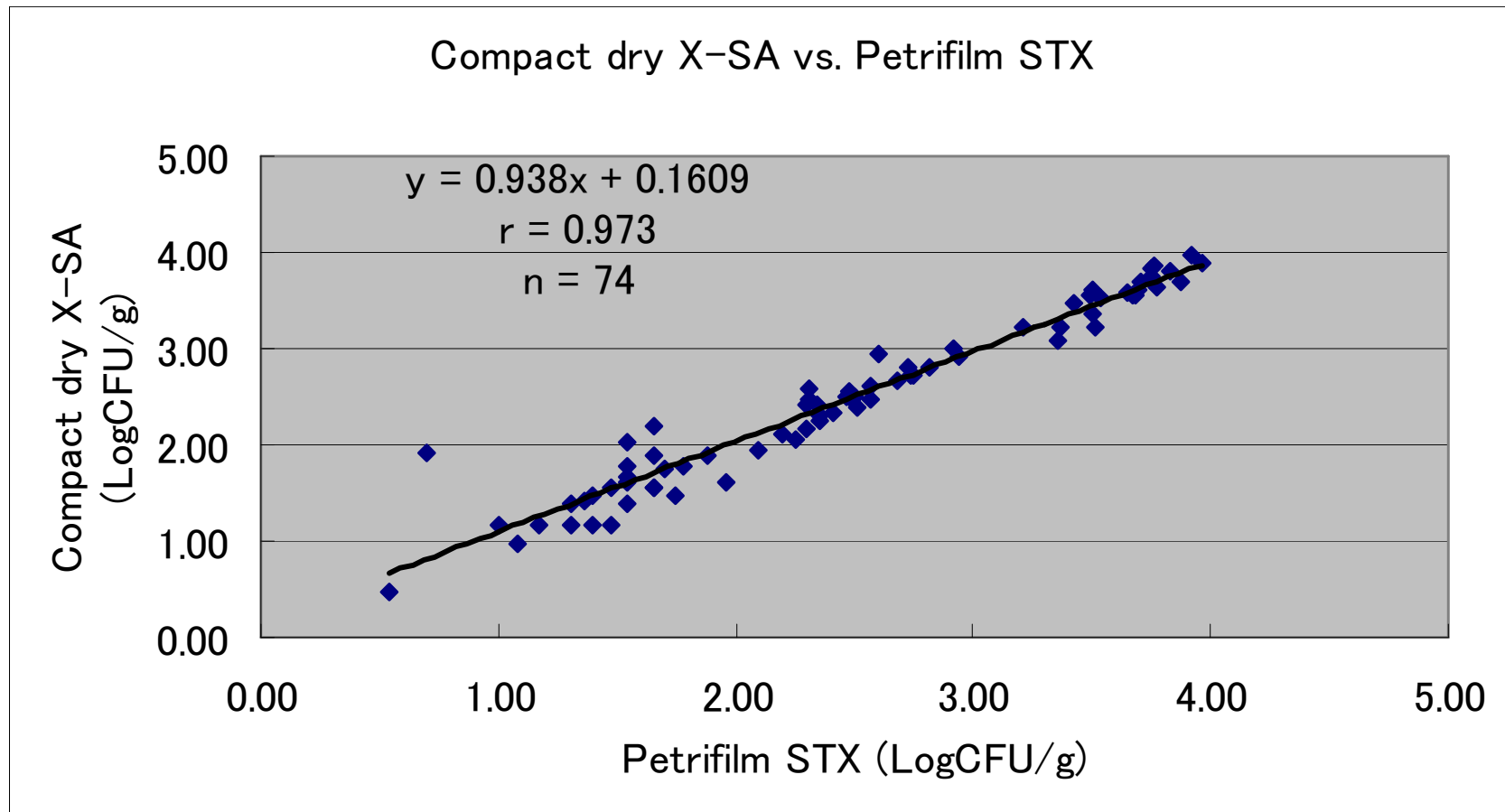


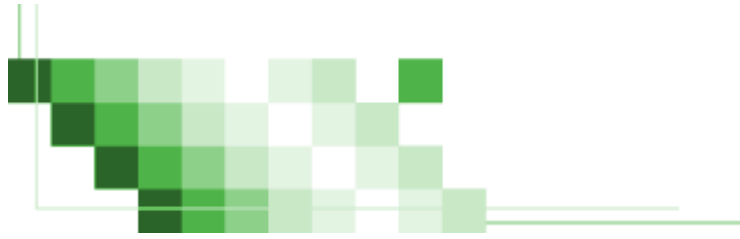
# Compact Dry X-SA (strains data)

Staphylococci (except for Saureus) (Colony color:logCFU/ml)	Compact Dry X-SA	Petrifilm STX	X-SA	Baird-Parker	MSEY
<i>Staphylococcus auricularis</i> ATCC 33753	not grown	not grown	not grown	black >5.00	pink >5.00
<i>Staphylococcus capitis</i> ATCC 27840	white 6.30	not grown	white >4.00	black 8.67	yellow 8.00
<i>Staphylococcus capitis</i> NS 3063	white 7.08	black >4.00	white 7.30	black 7.85	pink 7.00
<i>Staphylococcus caprae</i> NS 3096	white 7.45	black >4.00	white 7.48	black 8.56	pink 8.34
<i>Staphylococcus caprae</i> NS 3103	white 7.85	black 7.65	white 8.28	black 8.49	yellow 8.15
<i>Staphylococcus caseolyticus</i> ATCC 13548	white 7.63	black >3.00	not grown	black 7.60	pink >4.00
<i>Staphylococcus cohnii</i> NS 1683	white 8.06	black 7.67	white 7.70	black 8.20	pink 7.85
<i>Staphylococcus cohnii</i> NS 4353	white 7.00	black >4.00	white >5.00	black 8.11	pink 7.95
<i>Staphylococcus cohnii</i> 2 NS 1831	white 8.01	blue 7.62	white >5.00	black 8.34	yellow 8.28
<i>Staphylococcus delphini</i> NS 4674	white 8.21	black ! 8.01	white 8.32	black-EY 8.30	pink-EY 8.53
<i>Staphylococcus epidermidis</i> ATCC 12228	white 7.45	black >4.00	white ! 7.85	black 8.08	pink 8.11
<i>Staphylococcus epidermidis</i> ATCC 14990	white 7.89	black >4.00	white 8.28	black 8.15	pink 8.45
<i>Staphylococcus epidermidis</i> NS 1789	white 7.49	black >4.00	pale blue >5.00	black 7.70	pink 7.48
<i>Staphylococcus epidermidis</i> NS 1794	white 7.18	black 6.30	white ! 7.90	black 7.90	pink 7.60
<i>Staphylococcus epidermidis</i> NS 1795	white 7.45	black 6.30	white ! 7.78	black 8.40	pink 8.23
<i>Staphylococcus haemolyticus</i> ATCC 29970	white >4.00	black >4.00	not grown	black 7.85	pink >5.00
<i>Staphylococcus haemolyticus</i> NS 3436	white 7.15	black >4.00	white 7.30	black >5.00	pink 8.28
<i>Staphylococcus haemolyticus</i> NS 3422	not grown	black >4.00	not grown	black 8.41	yellow 7.60
<i>Staphylococcus hominis</i> ATCC 27844	not grown	not grown	not grown	black 7.30	yellow 7.00
<i>Staphylococcus hominis</i> NS 1834	not grown	not grown	white >5.00	black 5.10	yellow >5.00
<i>Staphylococcus hominis</i> NS 3324	white 7.30	black 7.23	white 7.30	black 8.34	pink 8.15
<i>Staphylococcus hyicus</i> NS 1840	white 8.59	black 7.92	white 8.92	black-EY 8.99	pink 8.90
<i>Staphylococcus hyicus</i> NS 4344	white 6.95	black >4.00	white >5.00	black 7.30	pink 8.04
<i>Staphylococcus intermedius</i> ATCC 29663	white ! 7.72	blue 7.26	white ! 7.70	black 7.90	pink 7.78
<i>Staphylococcus intermedius</i> NS 4668	white ! 8.51	mauve >4.00	white 8.15	black 8.74	pink 8.67
<i>Staphylococcus lentus</i> ATCC 29070	white 7.94	blue >4.00	white ! 7.30	black 8.62	yellow >5.00
<i>Staphylococcus lugdunensis</i> NS 3207	white 8.41	black >4.00	white >4.00	black 9.08	pink 8.78
<i>Staphylococcus lugdunensis</i> NS 3256	white 6.78	black >4.00	white 7.30	black 7.78	pink 7.48
<i>Staphylococcus saprophyticus</i> ATCC 15305	white 8.22	black >4.00	white 8.70	black 8.88	pink 8.83
<i>Staphylococcus saprophyticus</i> NS 3159	white 7.95	black >3.00	white 8.23	black 8.41	yellow 7.48
<i>Staphylococcus schleiferi</i> NS 3085	white 7.99	black >4.00	white >5.00	black-EY 8.38	pink 8.36
<i>Staphylococcus schleiferi</i> NS 3333	white 8.19	black 6.90	white ! 8.46	black 8.52	pink 8.18
<i>Staphylococcus sciuri</i> ATCC 29062	white 7.96	blue >4.00	white ! 8.00	black 7.85	pink 8.15
<i>Staphylococcus sciuri</i> NS 3213	white 7.89	blue >4.00	white >5.00	black >5.00	yellow 7.60
<i>Staphylococcus simulans</i> ATCC 27848	white ! 7.51	black 7.28	white >5.00	black 7.78	pink 8.11
<i>Staphylococcus simulans</i> NS 8029	white ! 7.51	not grown	white >5.00	black 4.56	yellow 7.70
<i>Staphylococcus wameri</i> ATCC 27836	not grown	not grown	not grown	not grown	yellow >4.00
<i>Staphylococcus wameri</i> NS 3127	white >4.00	not grown	white >5.00	black 7.60	pink 7.60
<i>Staphylococcus xylosus</i> ATCC 29971	white ! 6.48	black 6.30	white >5.00	black >5.00	pink >5.00
<i>Staphylococcus xylosus</i> NS 8030	white ! 8.00	black 7.68	white 8.11	black 8.04	pink 7.95
	EY:egg yolk reaction				
	!:In case of high bacterial number (>10 <sup>5</sup> ), positive color is developed				

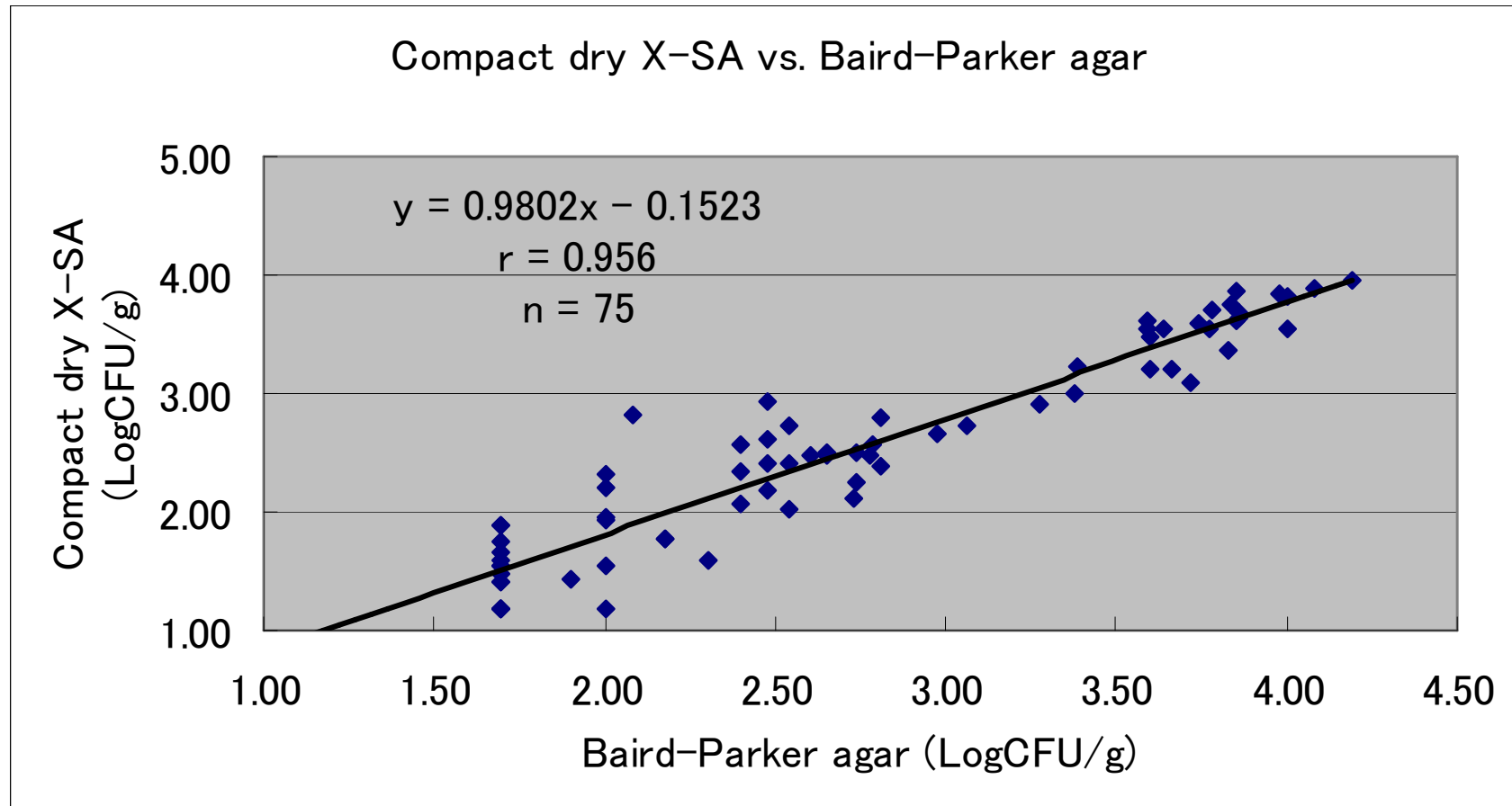


# Compact Dry X-SA (method comparison)

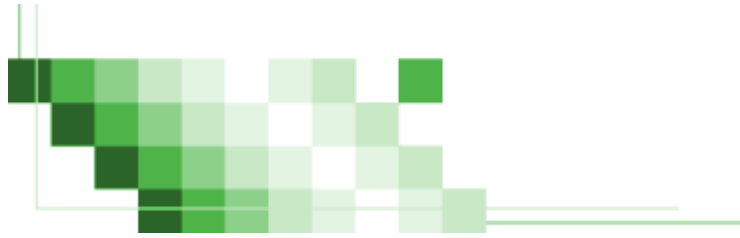




# Compact Dry X-SA (method comparison)







# Compact Dry X-SA (method comparison)

